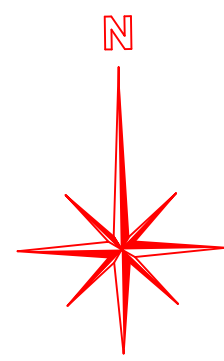




BUILDING MANAGEMENT UNIT
EULEX-KOSOVO



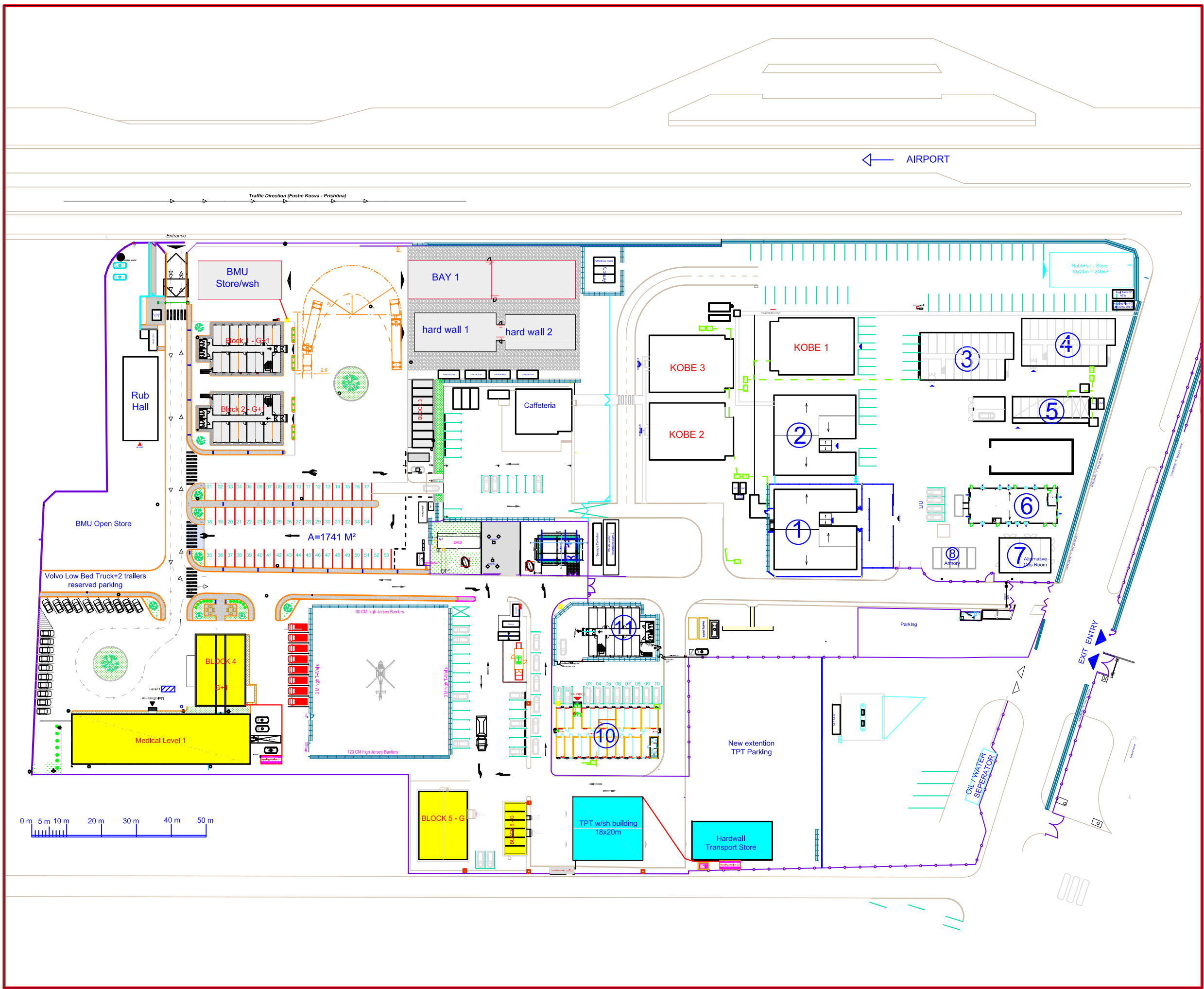
- Buildings connected to Heating Plant 01
- Buildings connected to Heating Plant 02

ESC & EEPC Layout

LOCATION: INDUSTRIAL ZONE
PRISHTINA

DRAWING TITLE:
ESC & EEPC LAYOUT

APPROVED BY:	
CHECKED BY:	
DESIGNED BY:	EULEX-BMU
SCALE:	N/A
UNITS:	m
DRAWING NO.:	01 - LOT 2
DATE:	



← AIRPORT

Traffic Direction (Fushe Kosva - Prishtina)

Entrance

BMU Store/wsh

Rub Hall

Block 1 - G+1

Block 2 - G+

BAY 1

hard wall 1

hard wall 2

Caffeteria

KOBE 3

KOBE 1

KOBE 2

2

3

4

5

6

7

LIU

8

Authority

Alternative

Room

EXIT ENTRY

BMU Open Store

Volvo Low Bed Truck+2 trailers reserved parking

A=1741 M²

BLOCK 4

Medical Level 1

90 CM High Jersey Barriers

3.0 High 3-Way

120 CM High Jersey Barriers

11

03 04 05 06 07 08 09 10

10

New extension TPT Parking

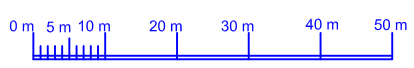
Parking

OIL-WATER SEPARATOR

BLOCK 5 - G

TPT w/sh building 18x20m

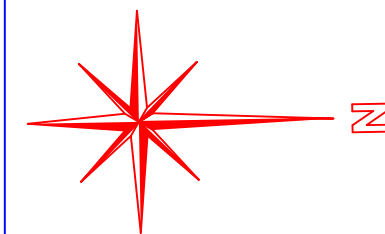
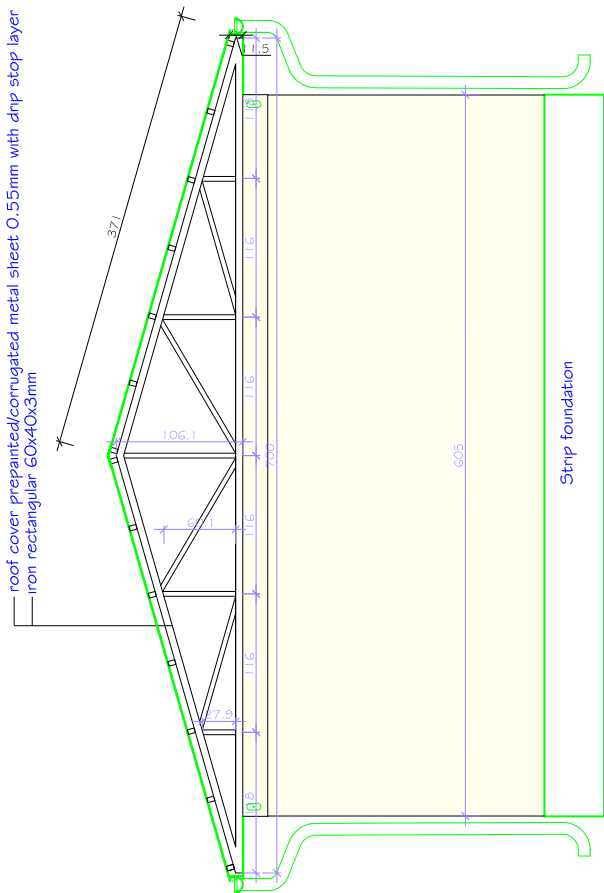
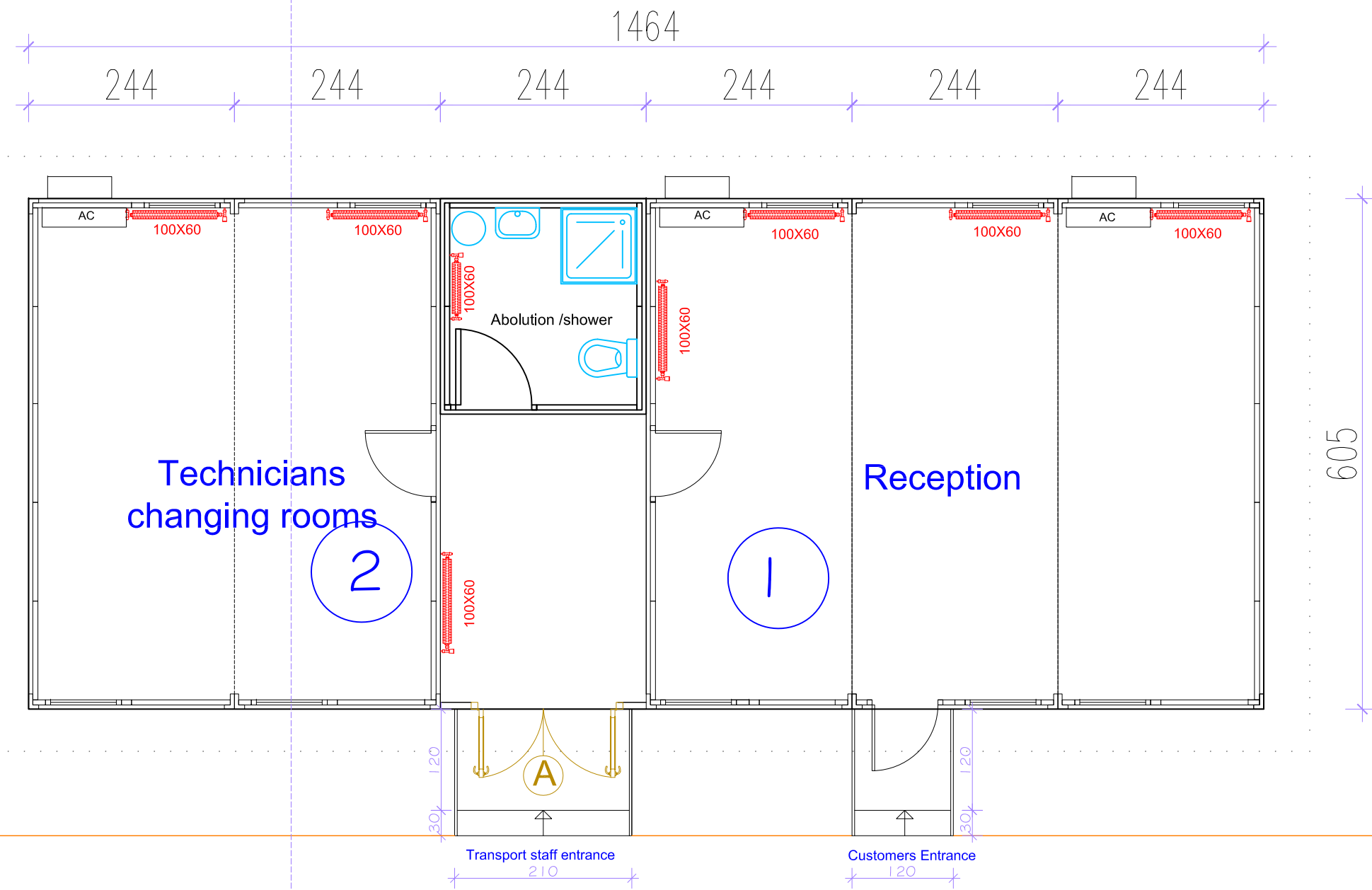
Hardwall Transport Store



BLOCK 6



BUILDING MANAGEMENT UNIT
EULEX-KOSOVO



PROJECT TITLE:
Upgrading of heating plants
ESC

LOCATION: PRISHTINA

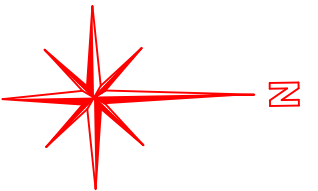
DRAWING TITLE:
Block 6 - EXISTING HEATING SYSTEM
RADIATORS

APPROVED BY:	
CHECKED BY:	
DESIGNED BY:	EULEX-BMU
SCALE:	N/A
UNITS:	cm
DRAWING NO:	02 - LOT 2
DATE:	Sep 2018

BLOCK 5



BUILDING MANAGEMENT UNIT
EULEX-KOSOVO

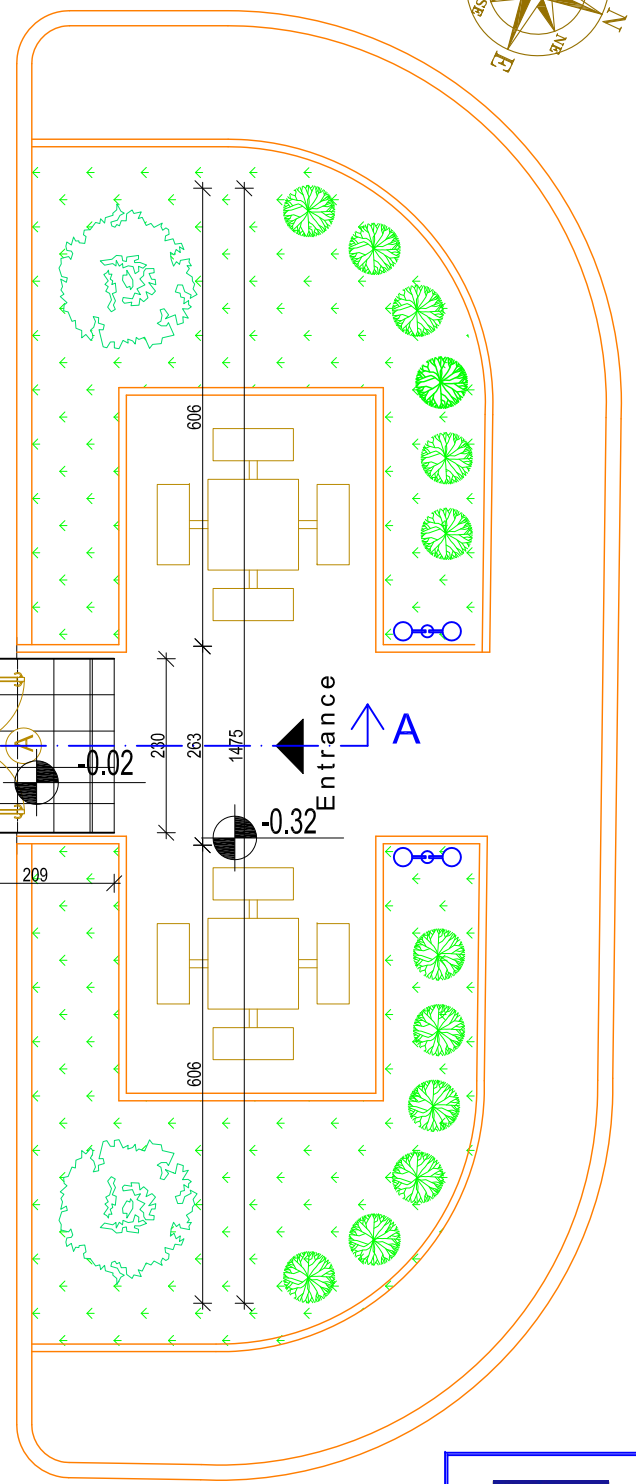
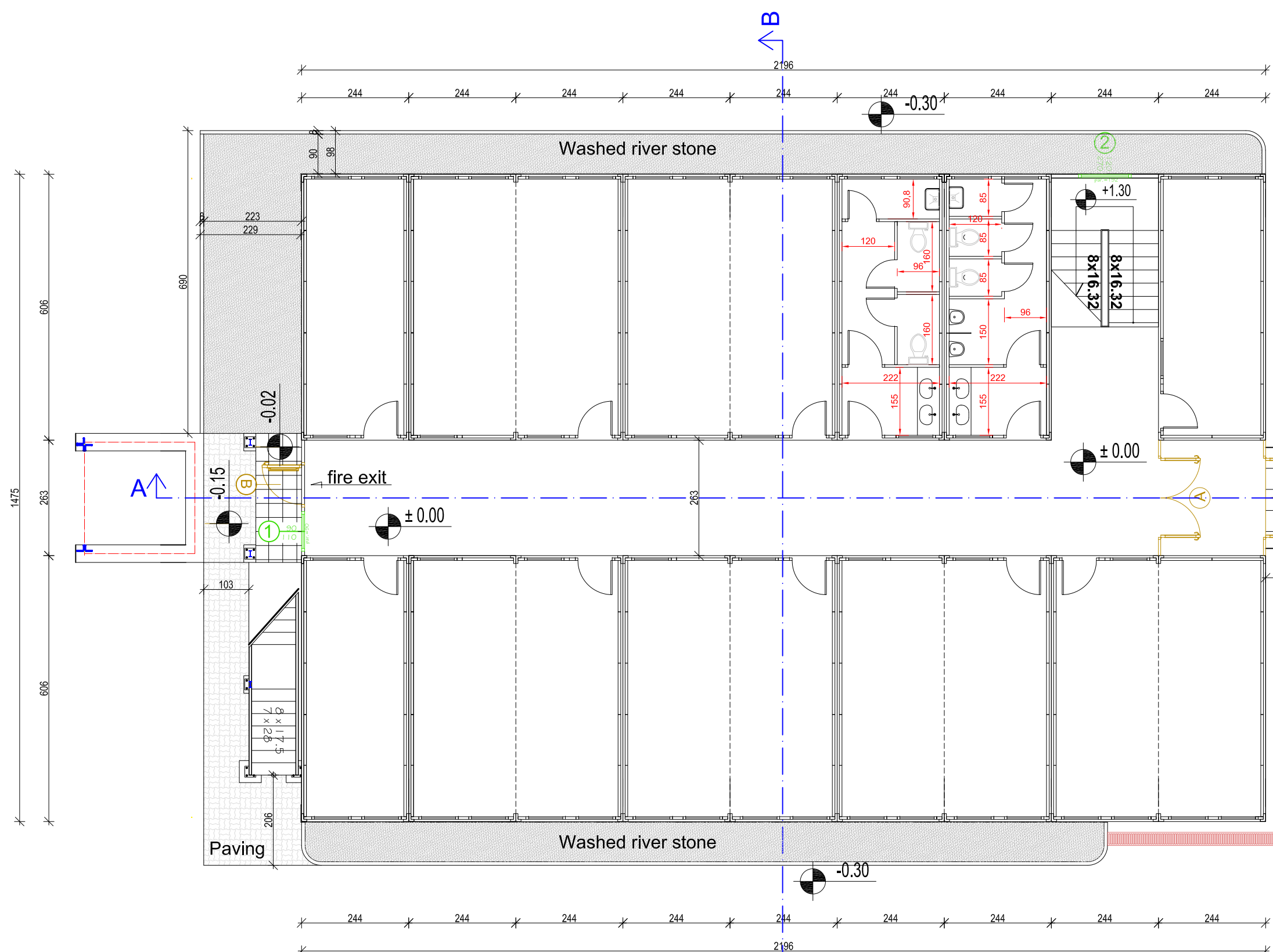


PROJECT TITLE:
Upgrading of Heating
Plants ESC

LOCATION: PRISHTINA

DRAWING TITLE:
Block 5 - EXISTING HEATING SYSTEM
-RADIATORS

APPROVED BY:	
CHECKED BY:	
DESIGNED BY:	EULEX-BMU
SCALE:	N/A
UNITS	cm
DRAWING NO:	03 LOT 2
DATE:	Sep 2018



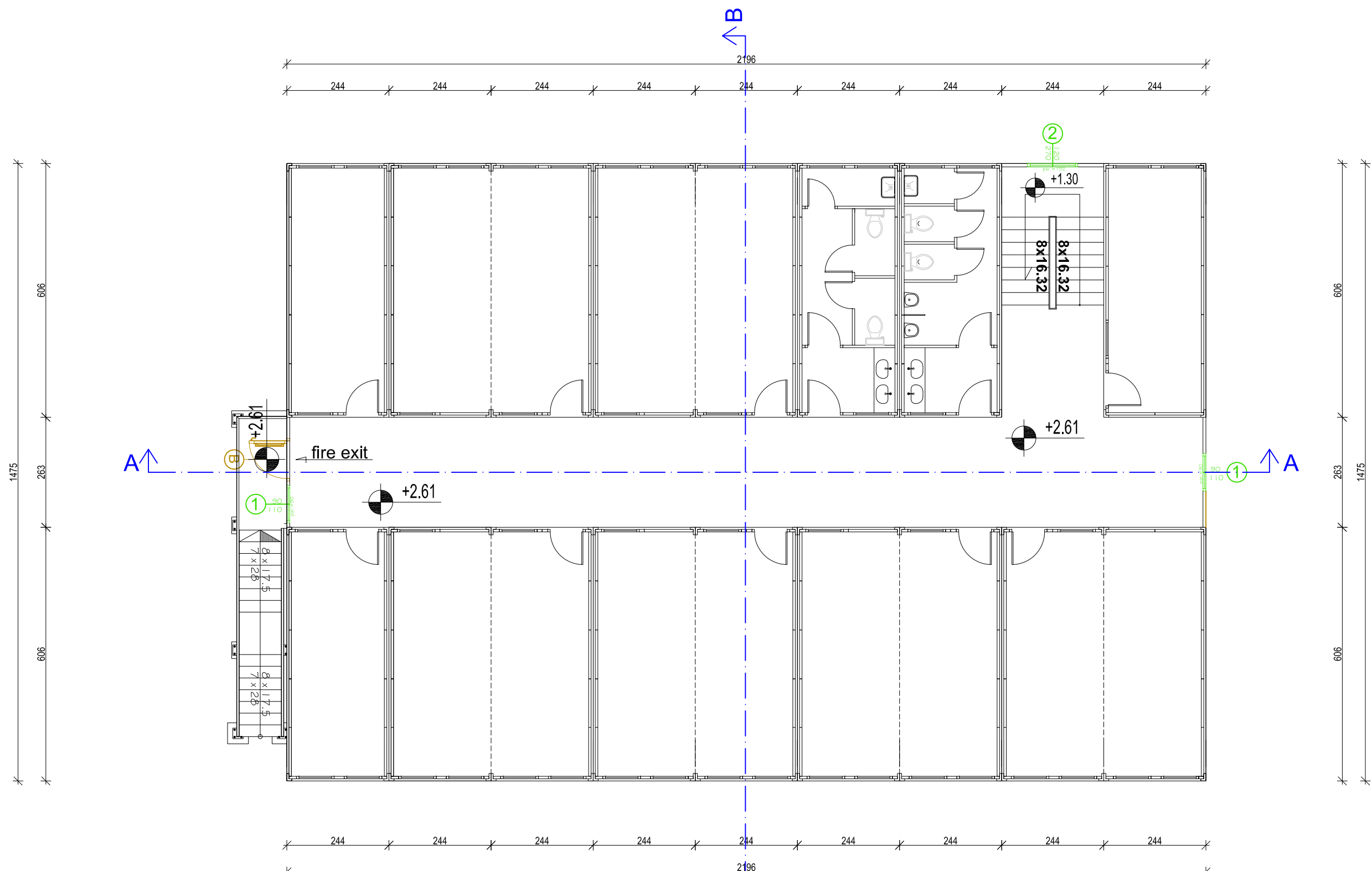
ground floor

ground floor
net area: 299 m²

Total net area:
590 m²



PROJECT TITLE: Upgrading of Heating Plants ESC	APPROVED BY:	
	CHECKED BY:	
LOCATION: Industrial zone, Prishtina	DESIGNED BY:	EULEX-BMU
	SCALE:	1:100
DRAWING TITLE: GROUND FLOOR LAYOUT - BLOCK 4	UNITS	cm <small>FORMAT</small> A3
	DRAWING NO:	
	DATE:	



first floor

**first floor
net area: 291 m²**

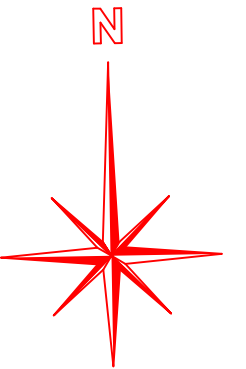
**Total net area:
590 m²**



PROJECT TITLE: Upgrading of Heating Plants ESC	APPROVED BY:	
	CHECKED BY:	
	DESIGNED BY:	EULEX-BMU
LOCATION: Industrial zone, Prishtina	SCALE:	1:100
	UNITS	cm
	FORMAT	A3
DRAWING TITLE: FIRST FLOOR LAYOUT -BLOCK 4	DRAWING NO:	
	DATE:	



BUILDING MANAGEMENT UNIT
EULEX-KOSOVO

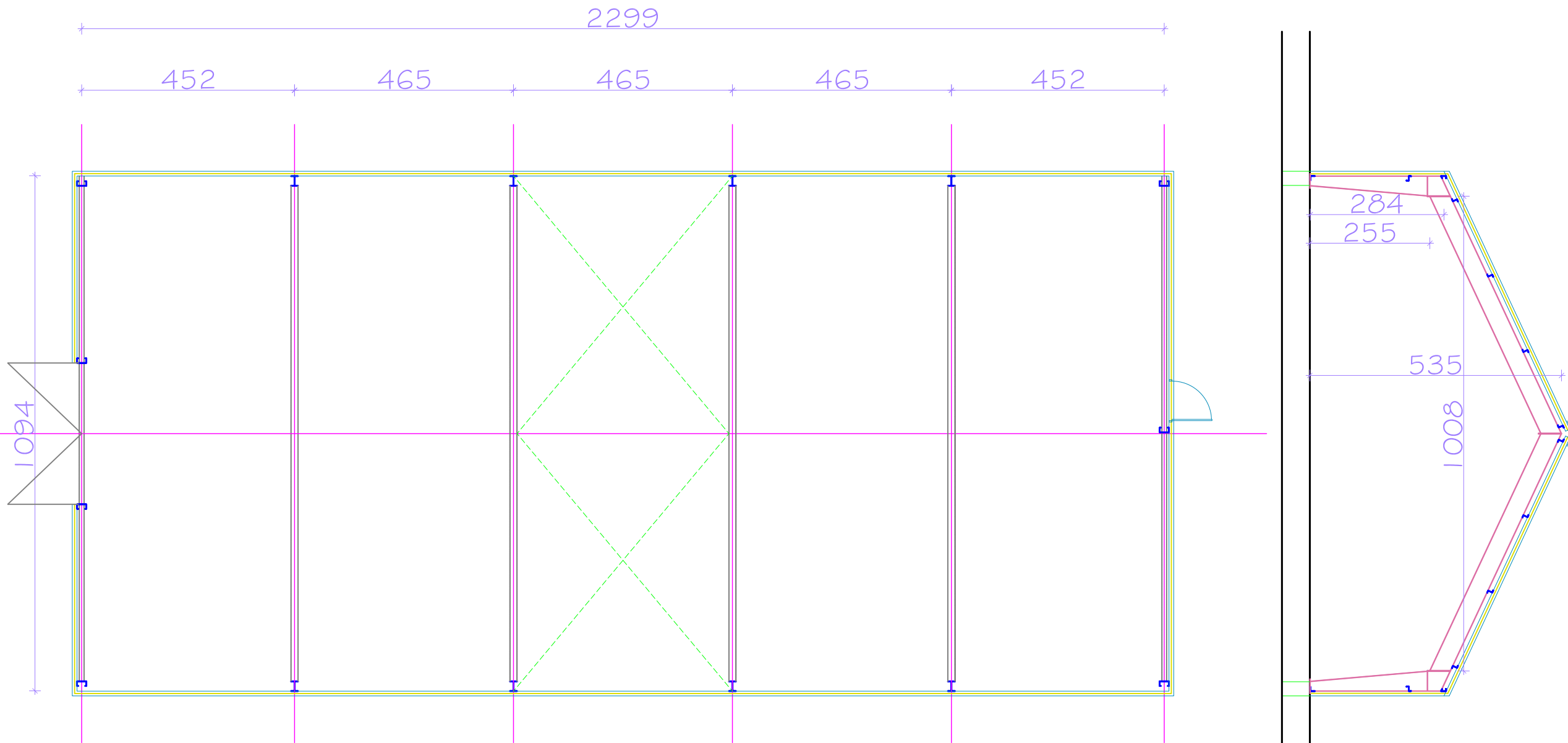


PROJECT TITLE:
Upgrading of heating plants
ESC

LOCATION: PRISHTINA

DRAWING TITLE:
HARD WALL STRUCTURE

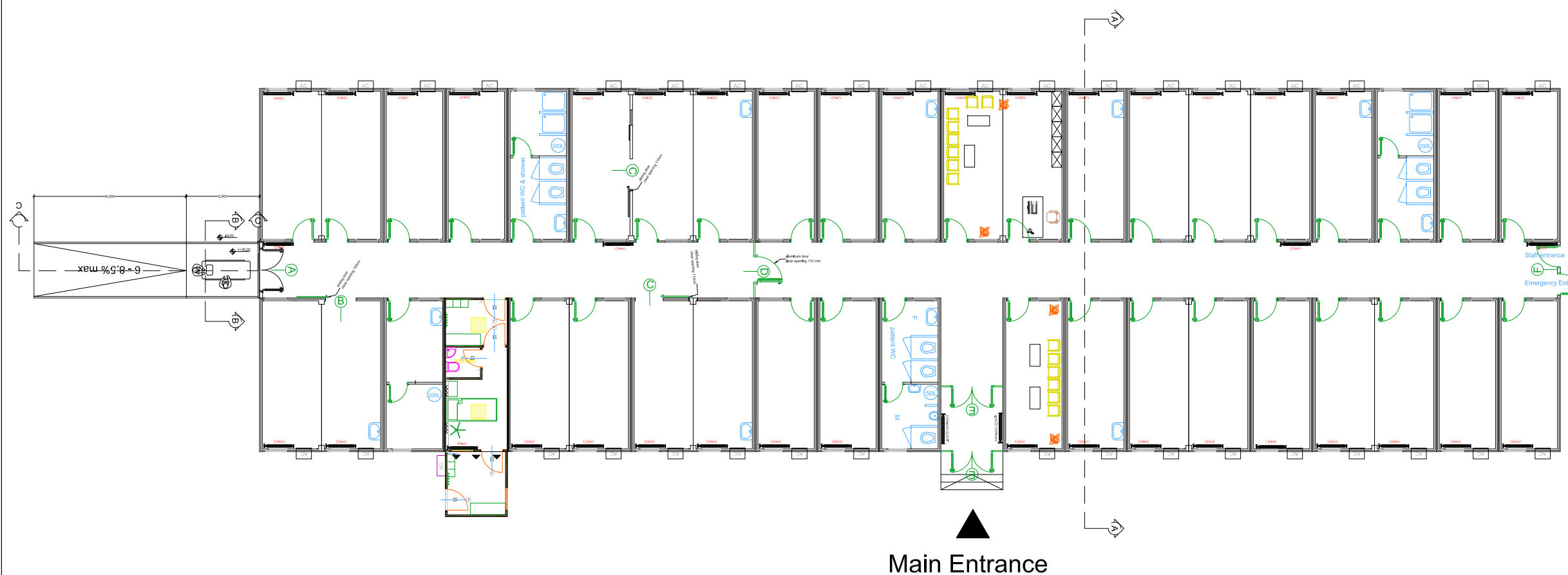
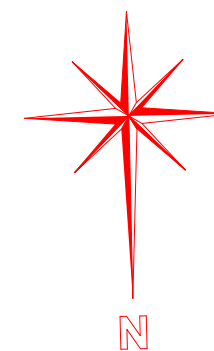
APPROVED BY:	
CHECKED BY:	
DESIGNED BY:	EULEX-BMU
SCALE:	1:50
UNITS	cm
DRAWING NO:	06 - LOT 2
DATE:	



Hard Wall



BUILDING MANAGEMENT UNIT
EULEX-KOSOVO



Project title:
Upgrading of Heating
Plants ESC

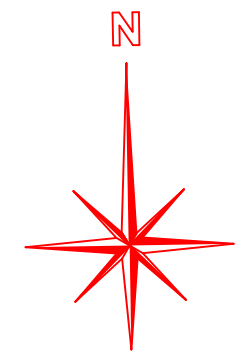
LOCATION: INDUSTRIAL ZONE
PRISHTINA

DRAWING TITLE:
MEDICAL LEVEL 1 -
EXISTING HEATING SYSTEM/RADIATORS

APPROVED BY:	
CHECKED BY:	
DESIGNED BY:	EULEX-BMU
SCALE:	N/A
UNITS	m
DRAWING NO:	07 - Lot 2
DATE:	



BUILDING MANAGEMENT UNIT
EULEX-KOSOVO



Project Title:
Upgrading of Heating
Plants ESC

LOCATION: INDUSTRIAL ZONE
PRISHTINA

DRAWING TITLE:
TRANSPORT W/SH EXISTING
CONDITION

APPROVED BY:	
CHECKED BY:	
DESIGNED BY:	EULEX-BMU
SCALE:	N/A
UNITS	m
DRAWING NO:	08 - LOT 2
DATE:	

SECTION "B-B"

